

# Camilla Morandi

## Between two grids

### A civic spine between Chiasso and Ponte Chiasso

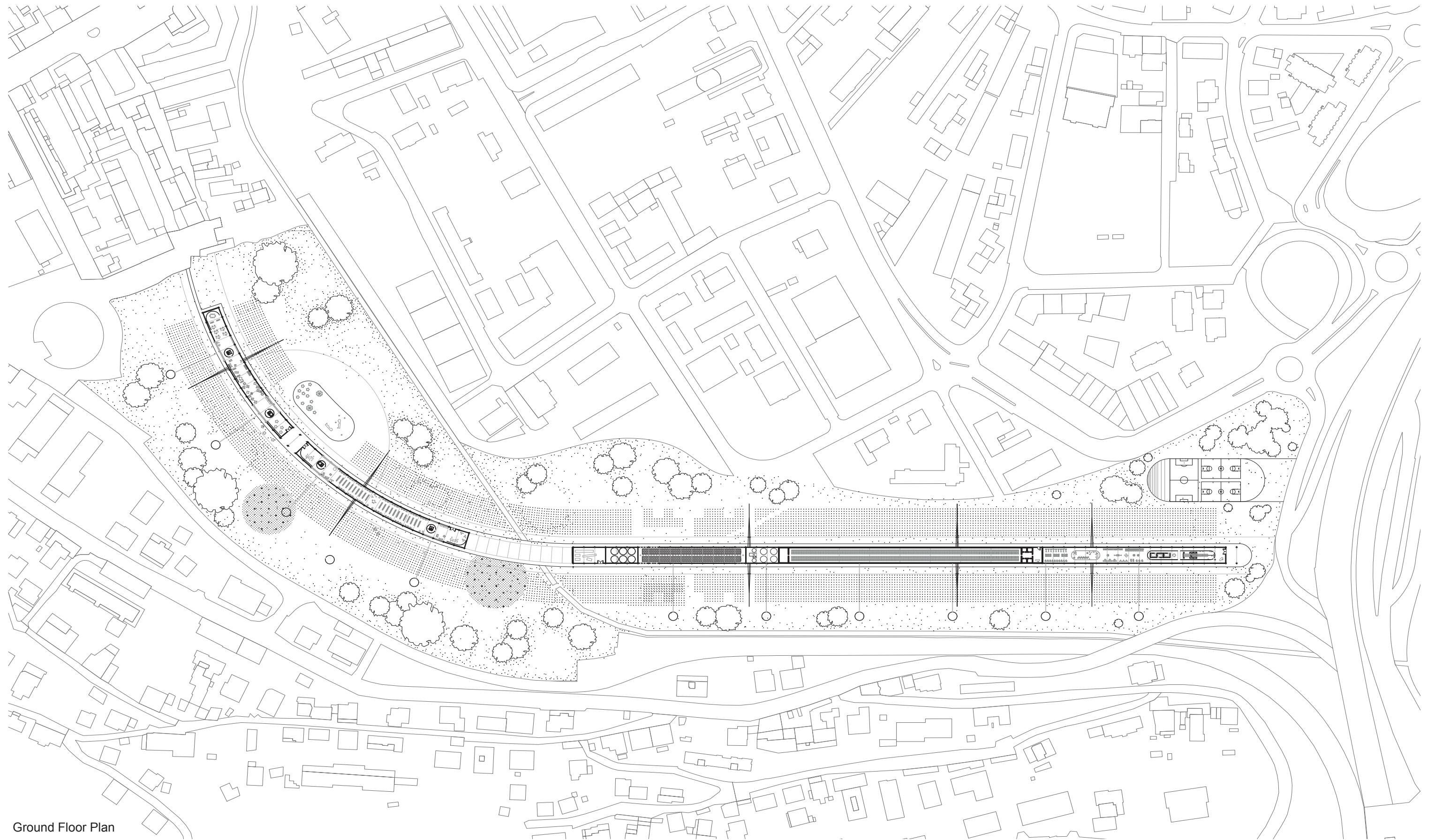
Embracing the concept and imaginary of energy as the motor that makes things do, I wanted to deal with the typology of a data center, placing it in a urban context where his presence and its function aims to be seen and used differently. I believe that data center are the new monument and representative building of today society, and yet their shape and use are unknown. What the project tries to deal with, is the amount of energy that a data center consume and the amount of energy that this produce, making them the main resource for the function and production of the building. The location of my intervention is situated between the two country, Italy and Switzerland. The area is going to be dismantled from the commercial check point and from there a new form of connection and borderless area can rise. The propose is to create a bridge between two states which can not only connect the physical part, its social relation and economic interest, but also connect the grids of energy which the two states keep divided.

The project aims to represent a full ecosystem based on workshop between spaces. It's presence along the whole plot maximize its capacity, strongly connected with its context. Along the sides of the building a green area, characterized by fields of agriculture, grow simultaneously with the energy flow of the building. The building welcome any function that is able to cooperate with each other. These functions are been selected in order to activate an energy flows, which allows each space to take and give energy from the spaces aside. At the center, the data center is placed as the beating heart of the whole complex, and derived spaces aside are meant to be at a free disposition to the community of Chiasso creating a cooperation system also between people. Indeed what the building host are spaces for sport facilities, such as gym and sports fields outside, a greenhouse, where production of vegetables is kept inside, and a learning center which offers spaces for study and working. The structure of the building behaves as a repetitive module that follows the whole length of the building. This structure keeps the technical elements above and allows the presence of inner spaces on the ground floor. What the structure does, is the function to irrigate the context which it has aside of it. This function expresses the production capacity of the building, to be the motor not only in its inside but also on its outside. Although the building has a self autonomy of production and consumption, its complex is not meant to be understood as something independent and off the grid, but rather a presence which aims to be always connected to its context and allow future connections.



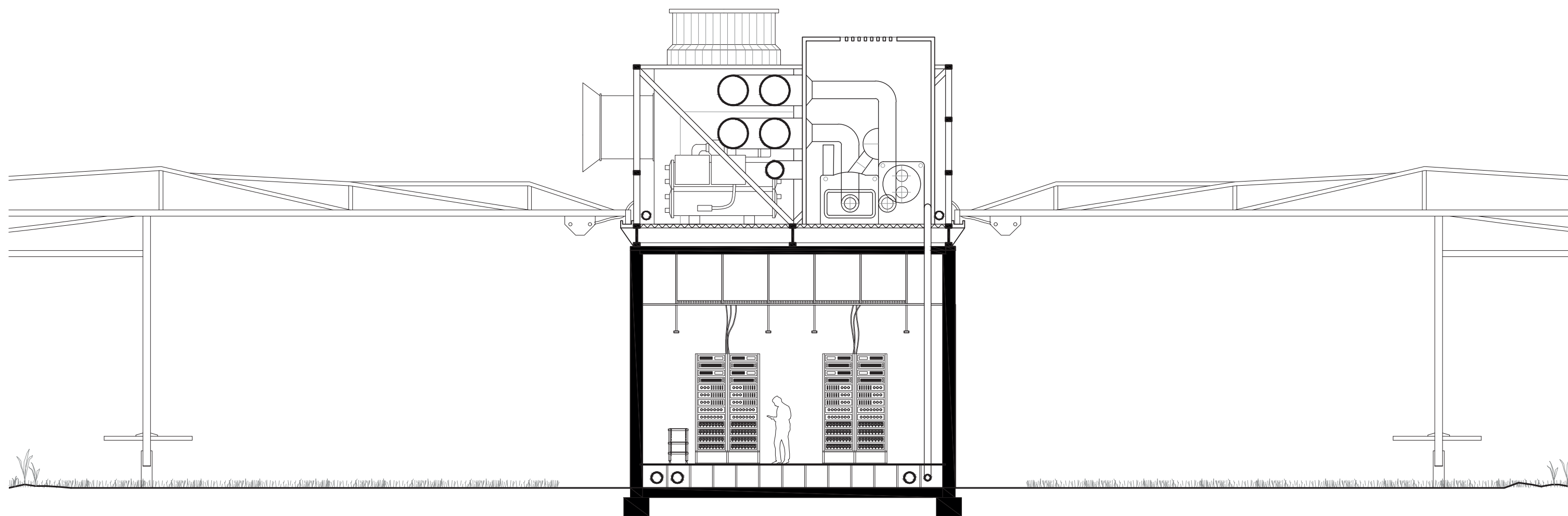






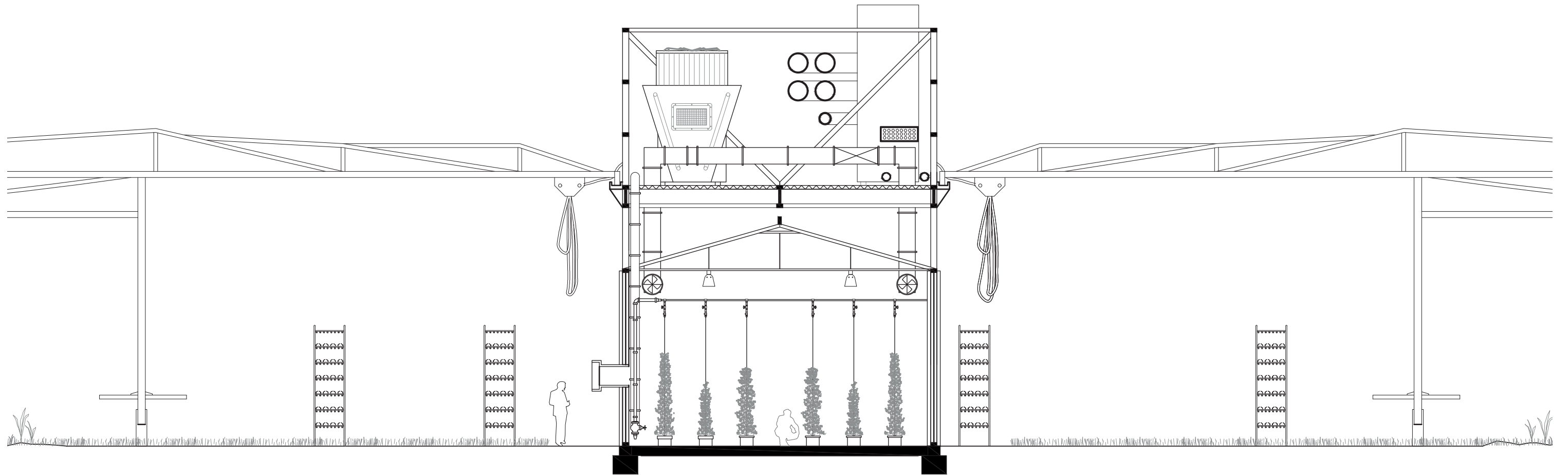
Ground Floor Plan





Section Data Center





Section Greenhouse











