

## Luke Peppard

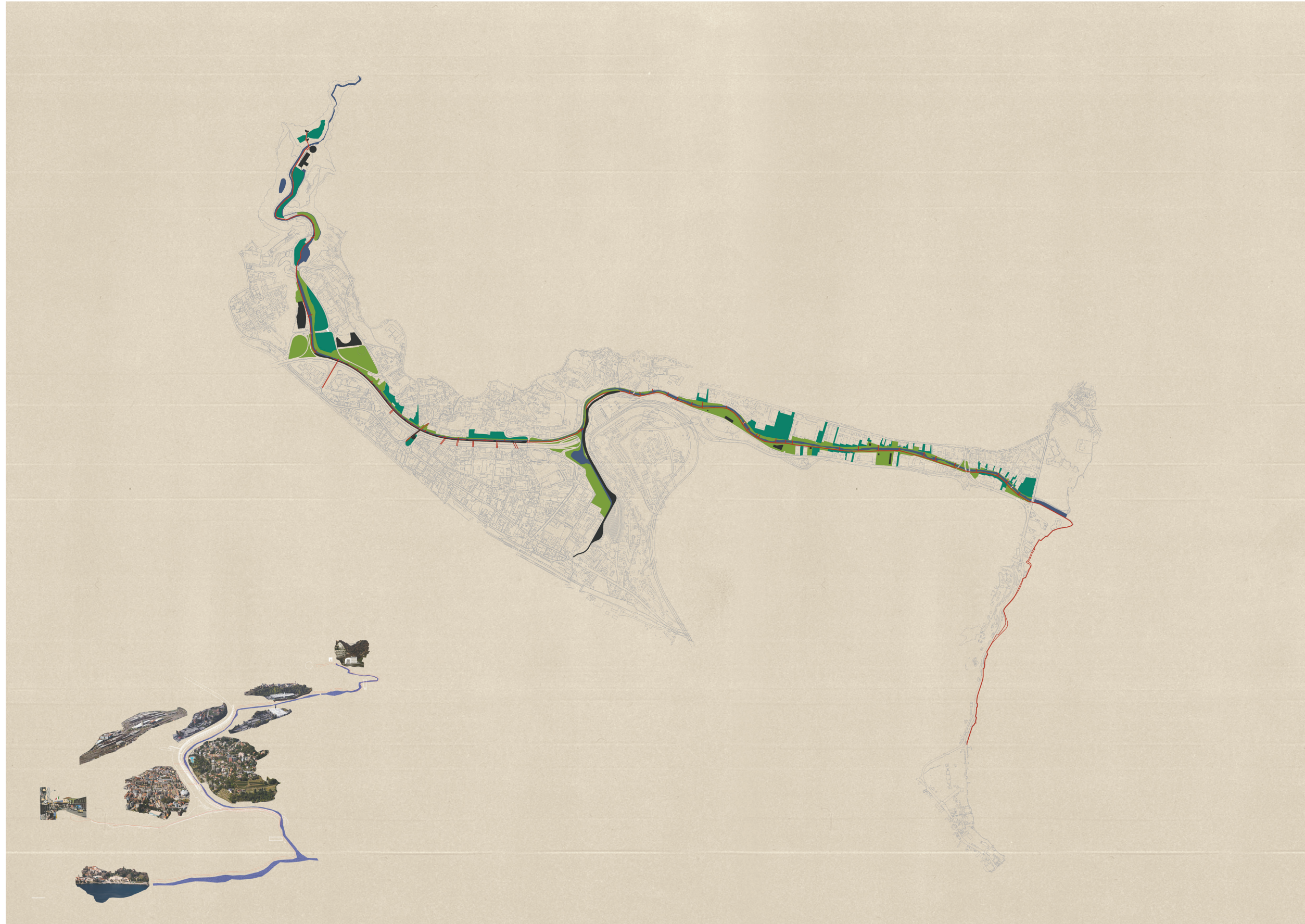
# Infrastructure of Hospitality Breggia River

The National Border Between Chiasso and Ponte Chiasso/Como is a cut in the cultural and urban Fabric of the place and while man-made is imposed upon an underlying geology. The Natural Landscape tends not to acknowledge this joint line between Italy and Switzerland. The Breggia River an example of this also makes a cut within this landscape however the infrastructure of its construction is what has notable damaging affects to the relationship between the urban landscape and its territory. While the border divides these two places the water flowing from the Breggia gorge to Lake Como connects them and with this lies a potential of integration.

The Idea of the project is to re-make the existing infrastructure along the Breggia river's path connecting the Breggia gorge with the lake shore of Como. In doing this the project re-imagines this infrastructure as one of food production and hospitality. The master plan deals with existing situations along the rivers length and as a result gives 6 projects of which four are developed architectonically. The commercial dogana at the border is reorganised with an elevated park infrastructure providing shade and service to the new dogana while giving public park land back to the city of Chiasso. The noise protection infrastructure on the north side of the Highway is remade into a vertical farm housing social programmes such as pubic markets for the food grown. This remaking also remould the river section providing a linear park on the north side of the river. The left over space of the city between the two shopping centres at Centro Breggia is made into a productive park and a Greenhouse infrastructure is built on the unused rooftop space of these shopping structures. The abandoned ruin of the Saceba Concrete infrastructure is consolidated and transformed into a Centre for Celebration and cultivation providing space for both public and private celebratory events while maintaining a daily use of food production. In this Transformation one finds a Cathedral a Dining hall a reading house and Theatre in the valley park.

Finding what this new re-making can take from the natural resources that exist in the landscape the project will act in a permanent manner dealing with the earth and a temporal manner dealing with the sky. In this way the project could achieve the potential of a Self sustainable entity for the future Productive and social Life of both the landscape of Chiasso and Como.





**Breggia Valley**



**Centro Breggia.Productive Park**



Highway Chiasso.Vertical Greenhouse



**Border Garden.Floating Islands**



