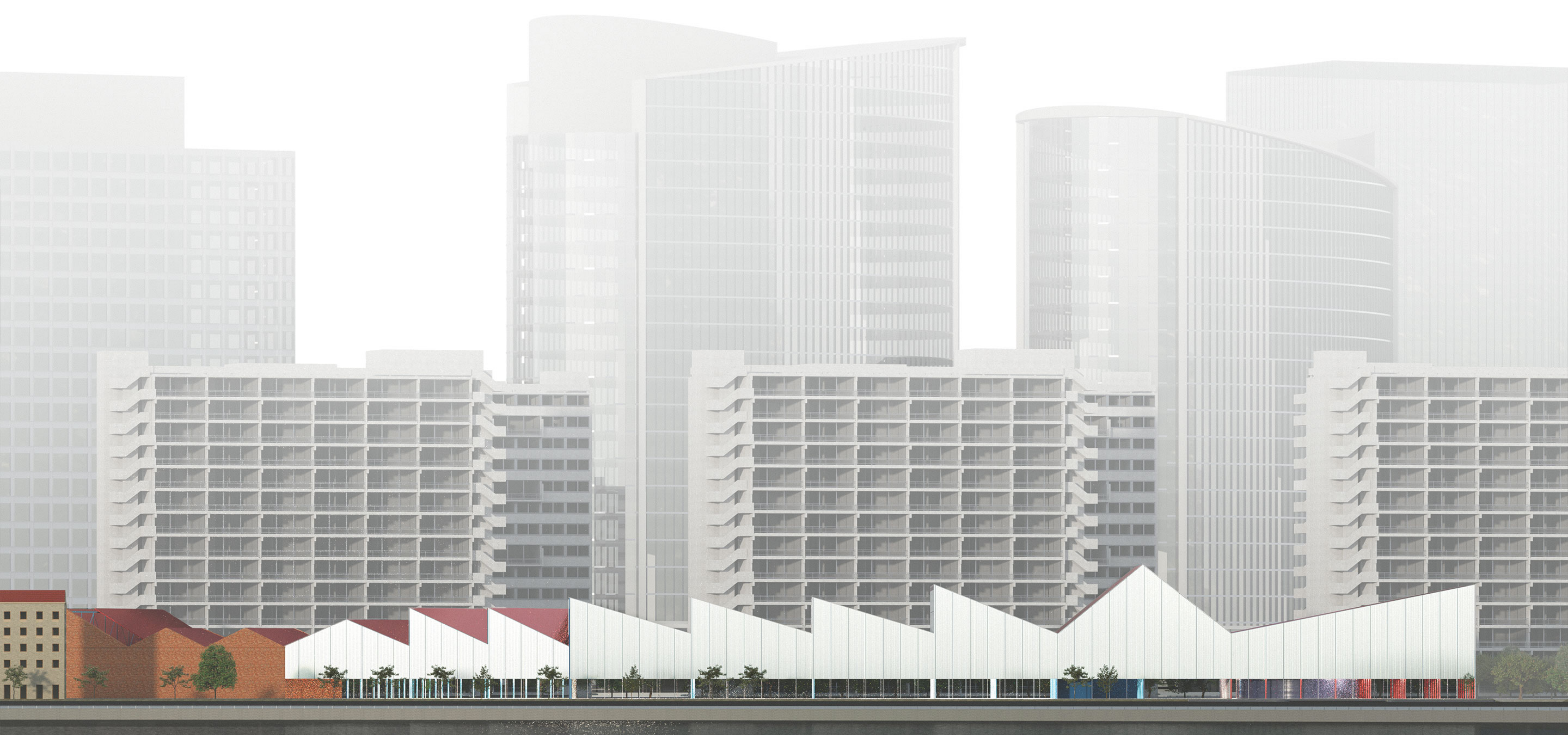
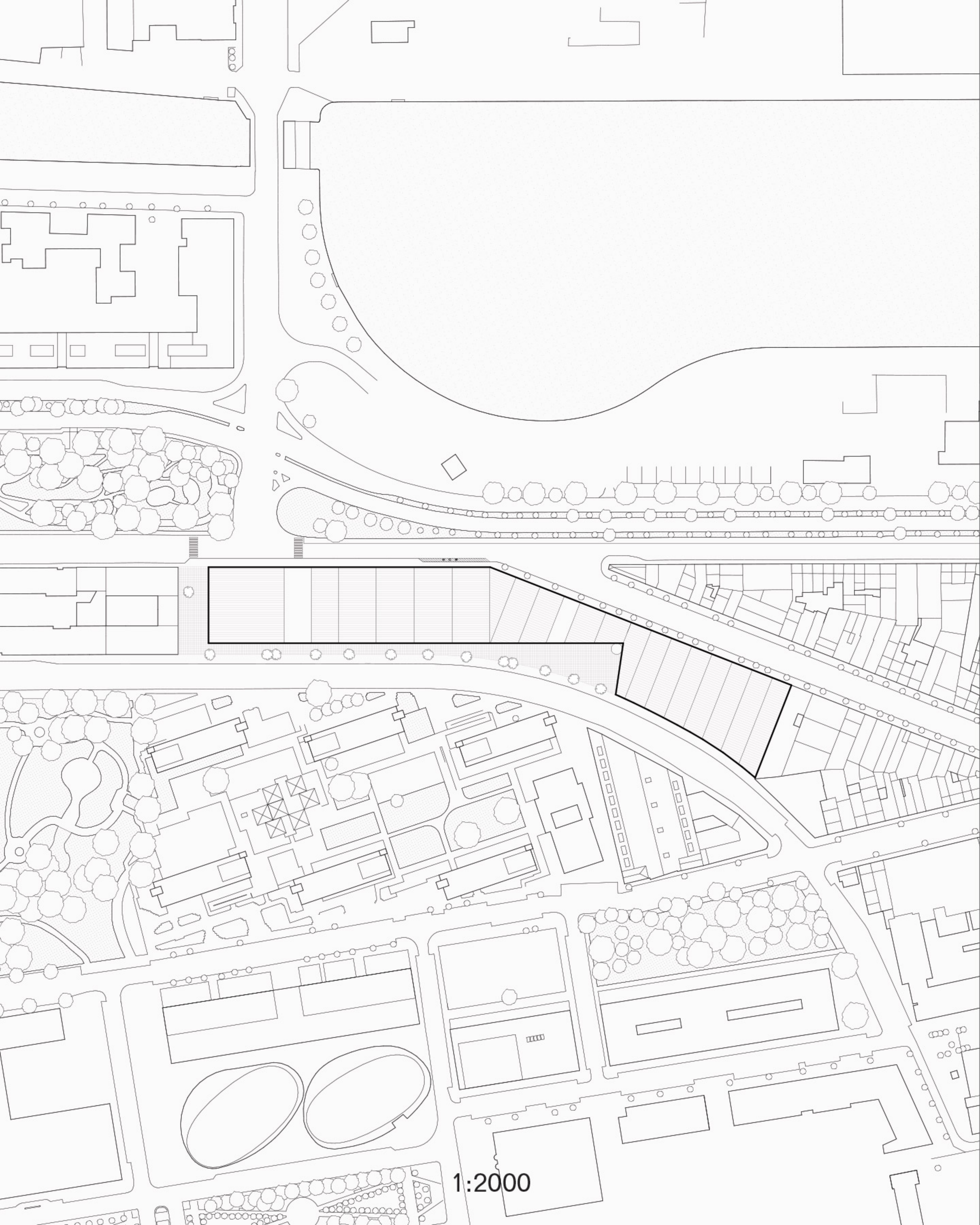


Edoardo Massa

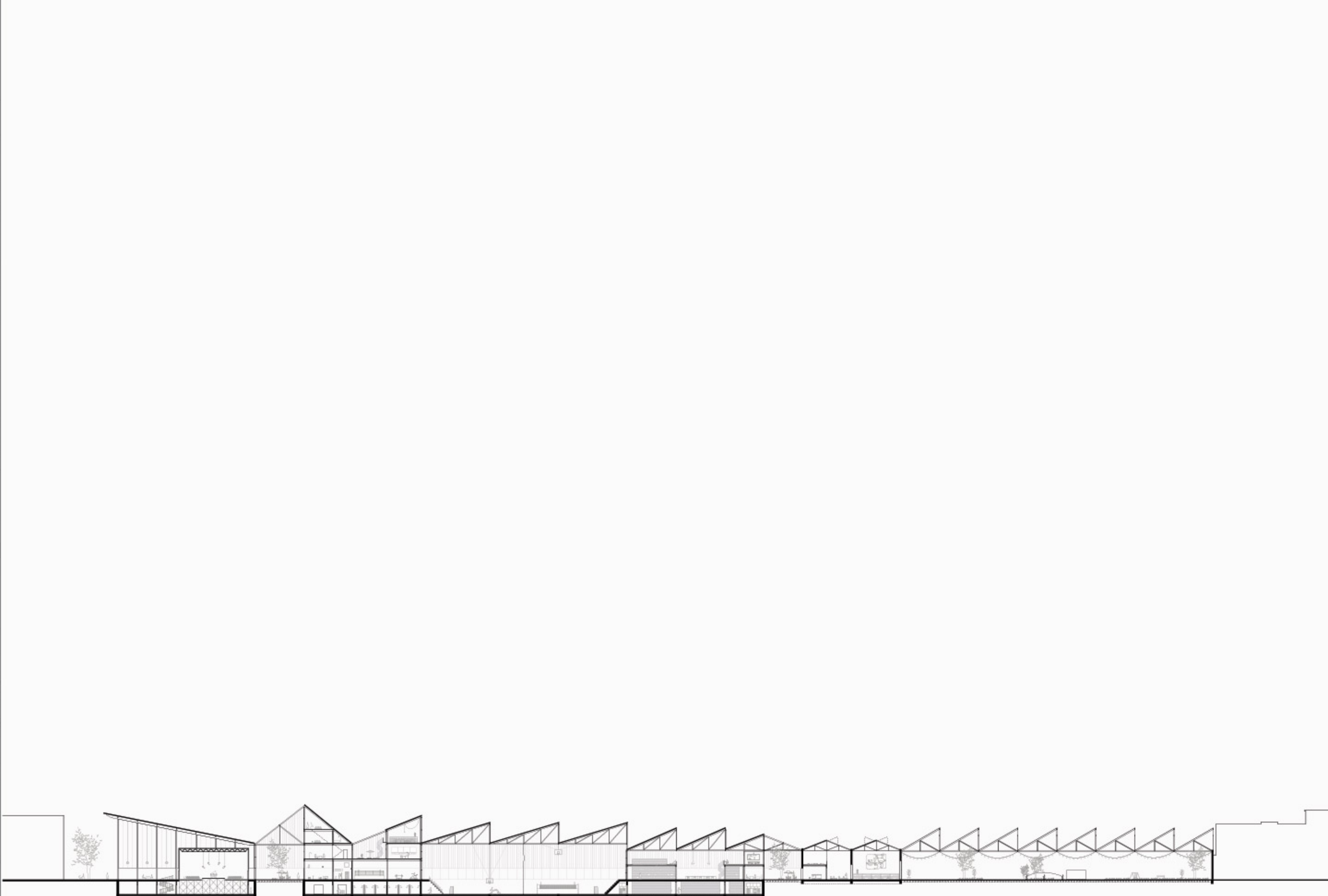
Side by Side. Klavertje Vier Civic Center
Klavertje



From Brussels with Love.
The Production of Culture



1:2000



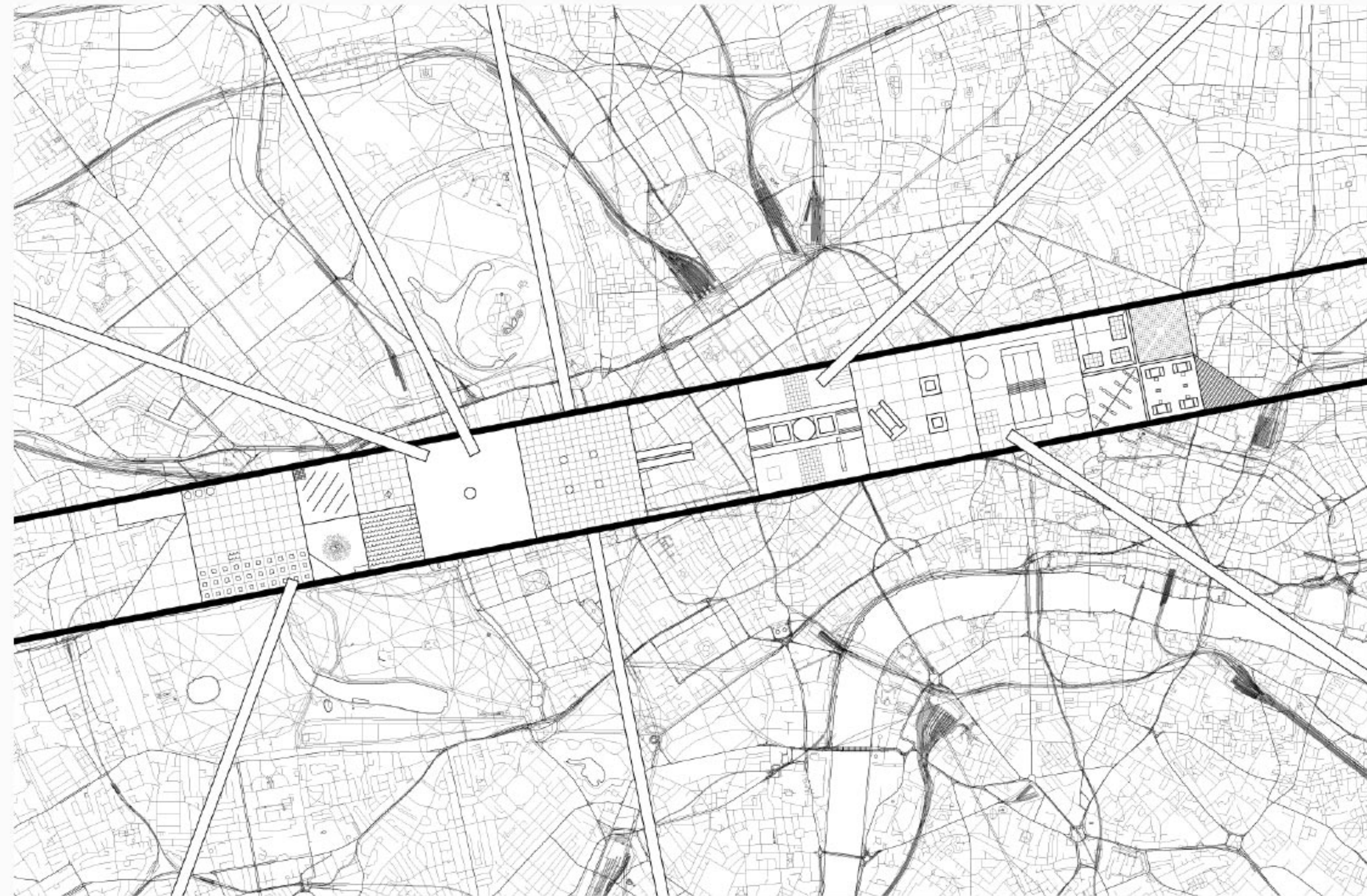
1:2000



The Ancienne Paul Devis steel factory is the face of the genealogy of the industrial Quartier Nord. Even after more than a century, its architectural presence remains iconic and speaking for the entire neighbourhood.



As a catalyst for the new area, keeping the existing halle and extending it becomes the way of standing out its archetypical figure. So, the industrial aspect of the old becomes the basis of the evolution of the new. By doing so, the new intervention is not competing nor fading. The continuation of its figure becomes the attentive response to the identity of the halle.



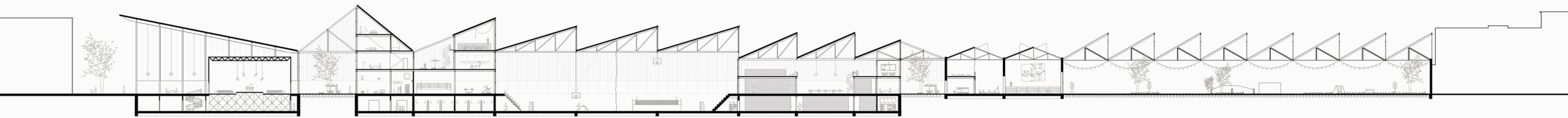
Such a long building, as a place of auto-segregation, let the user detach from what surrounds it. Contrary to modern architecture and its desperate afterbirths, this new architecture is neither authoritarian nor hysterical: it is the hedonistic science of designing collective facilities that fully accommodate individual desires.

OMA, Exodus, 1972

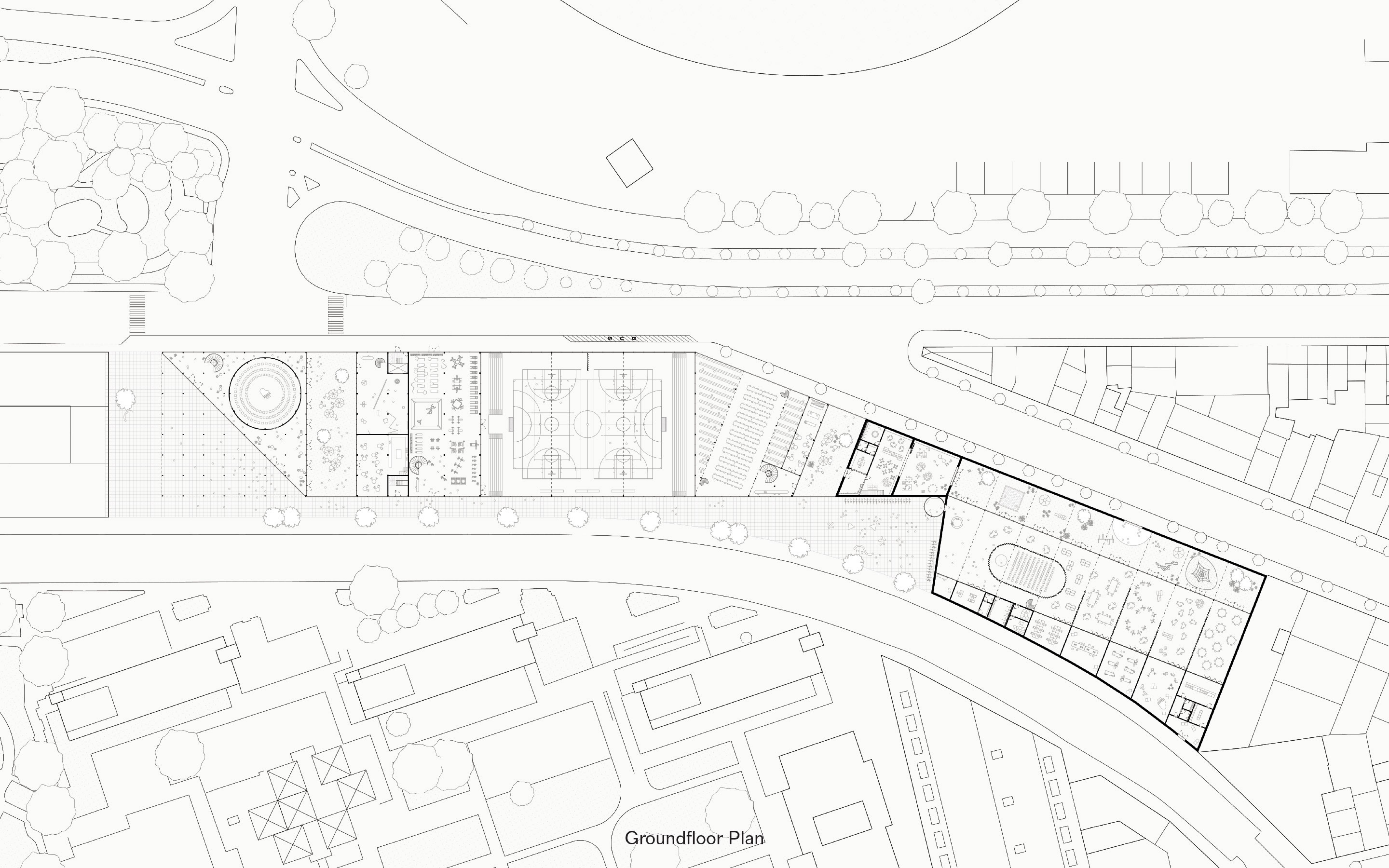


An inclusive programme, and spatial solutions that would provide accessibility, and attract interest from all age groups and social classes. That is a role of architecture – indeed, one of its most noble. The open and inviting street, the exhibition spaces, the public restaurant with communal tables. All of this made SESC Pompéia a citadel of freedom, a dream of civic life made real.

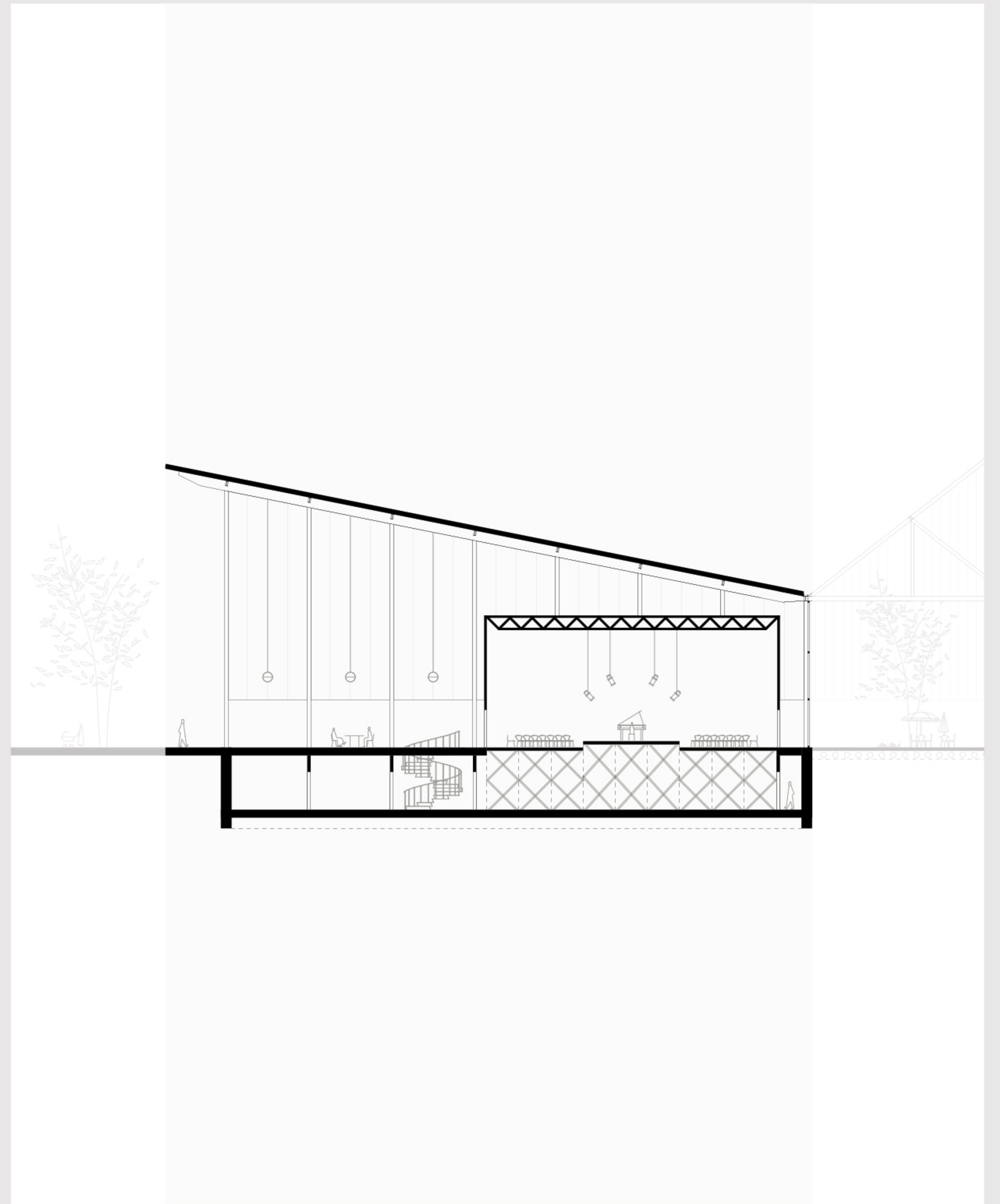
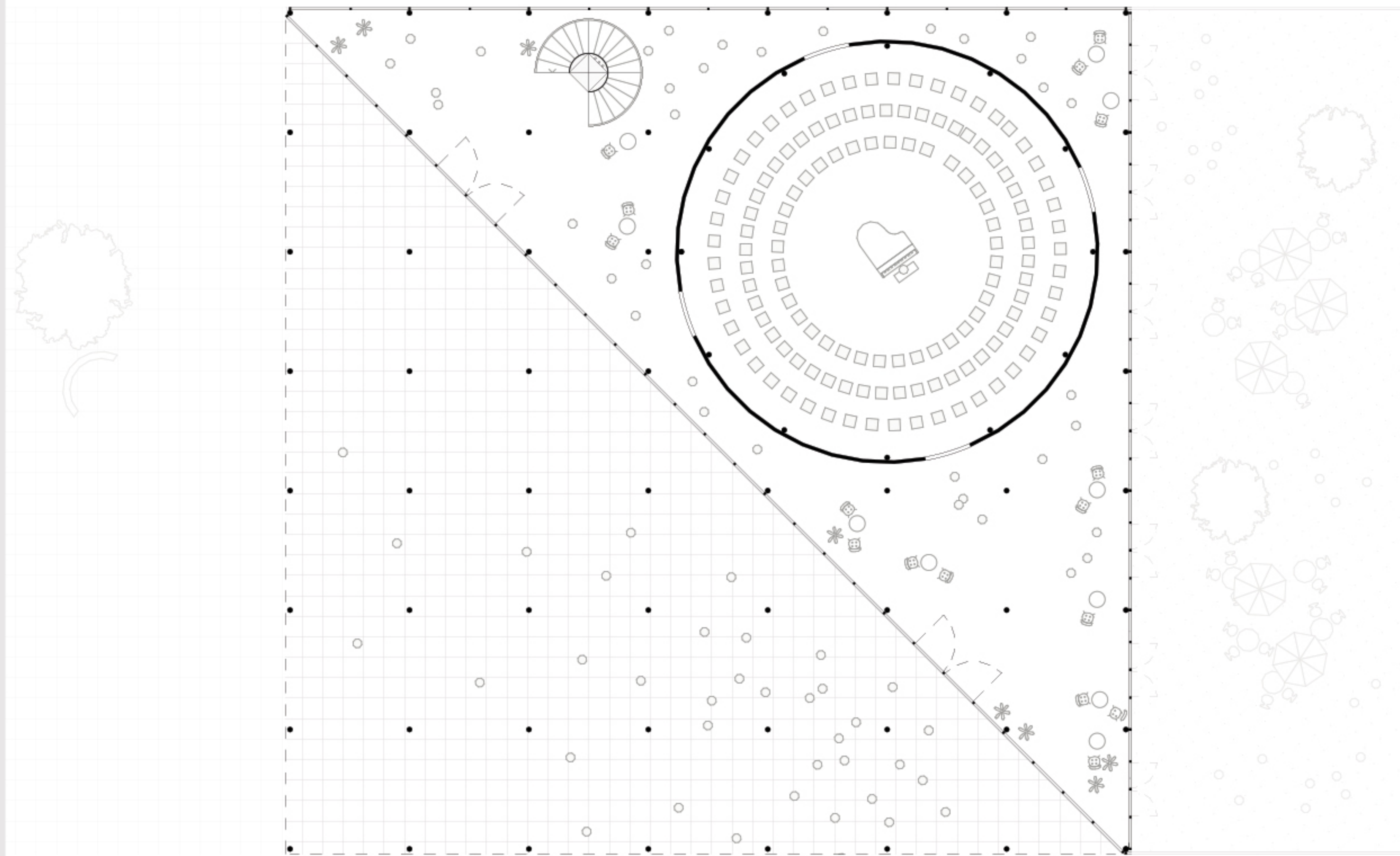
Lina Bo Bardi, SESC Pompéia, 1977-1986



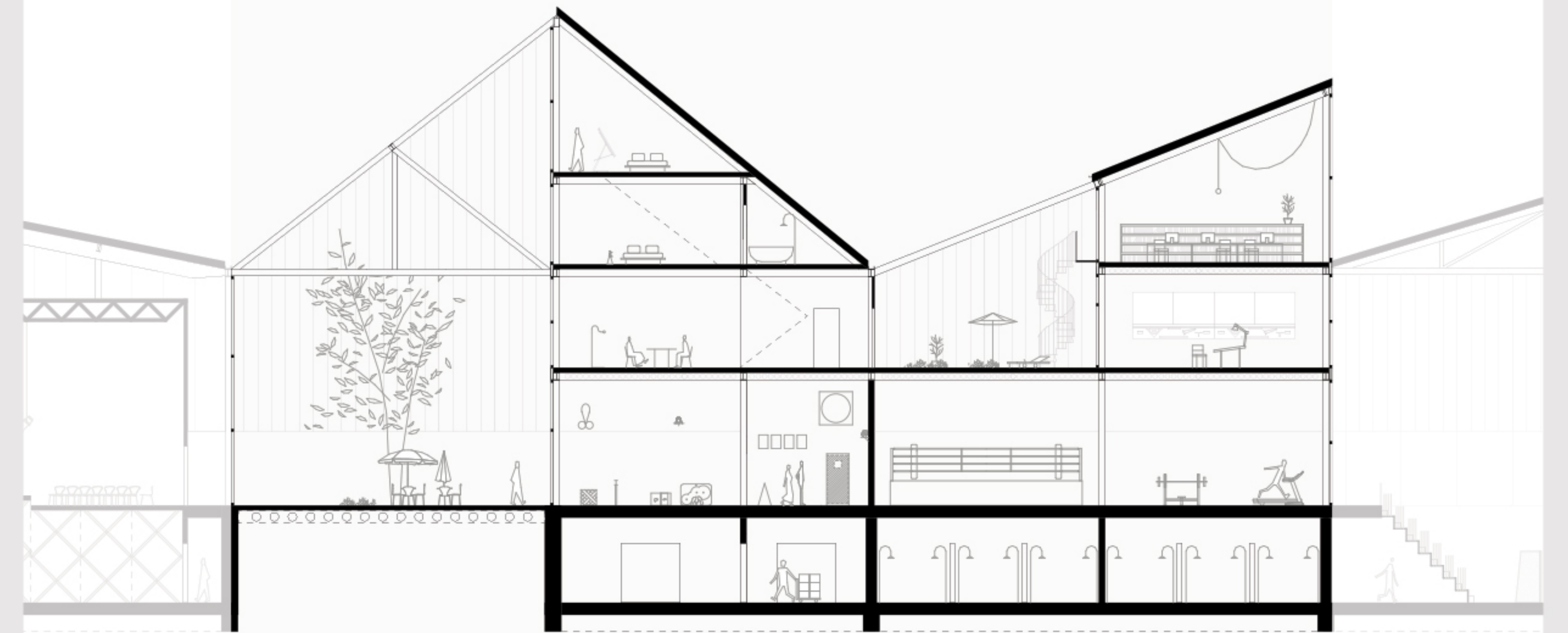
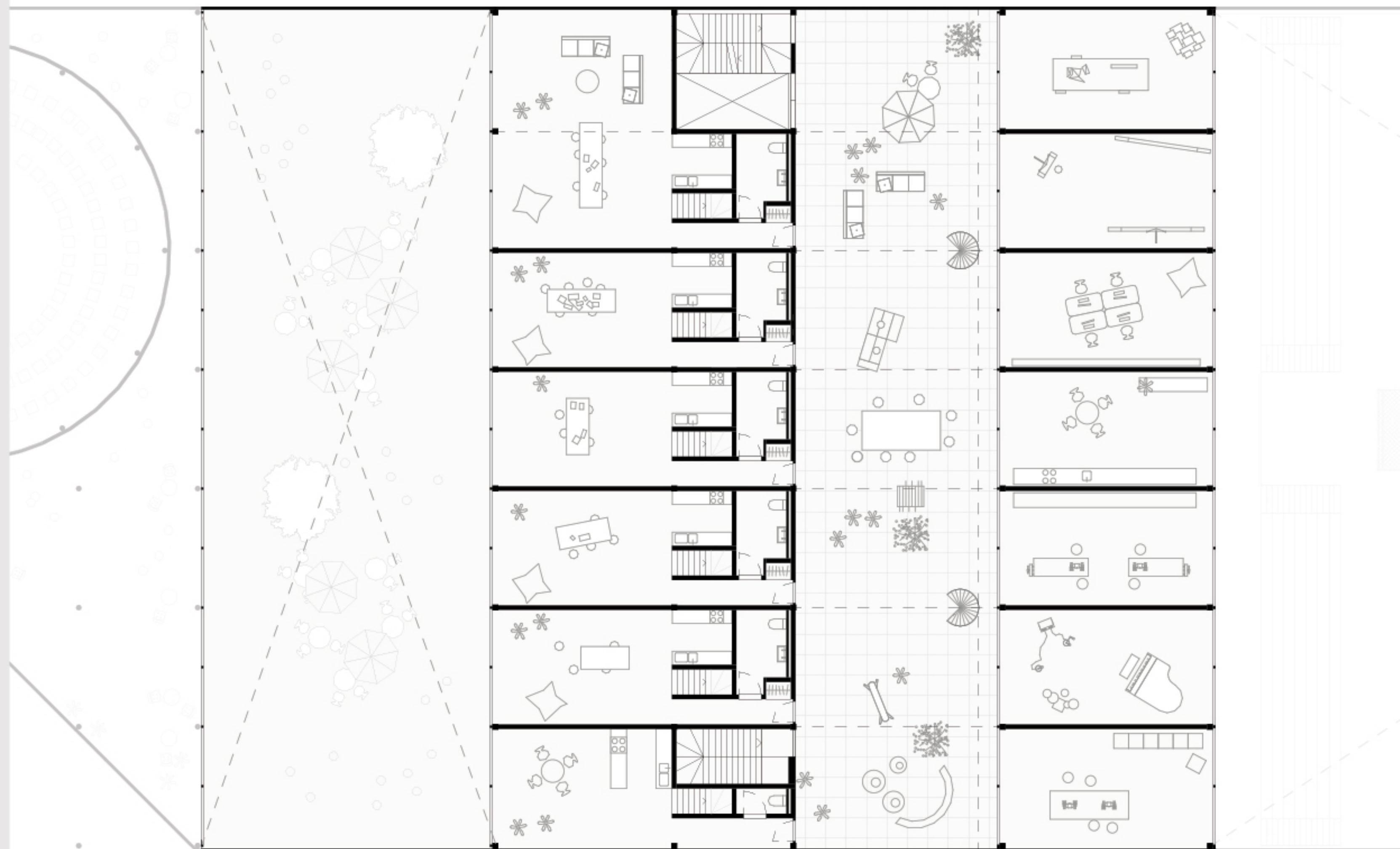
Longitudinal Section



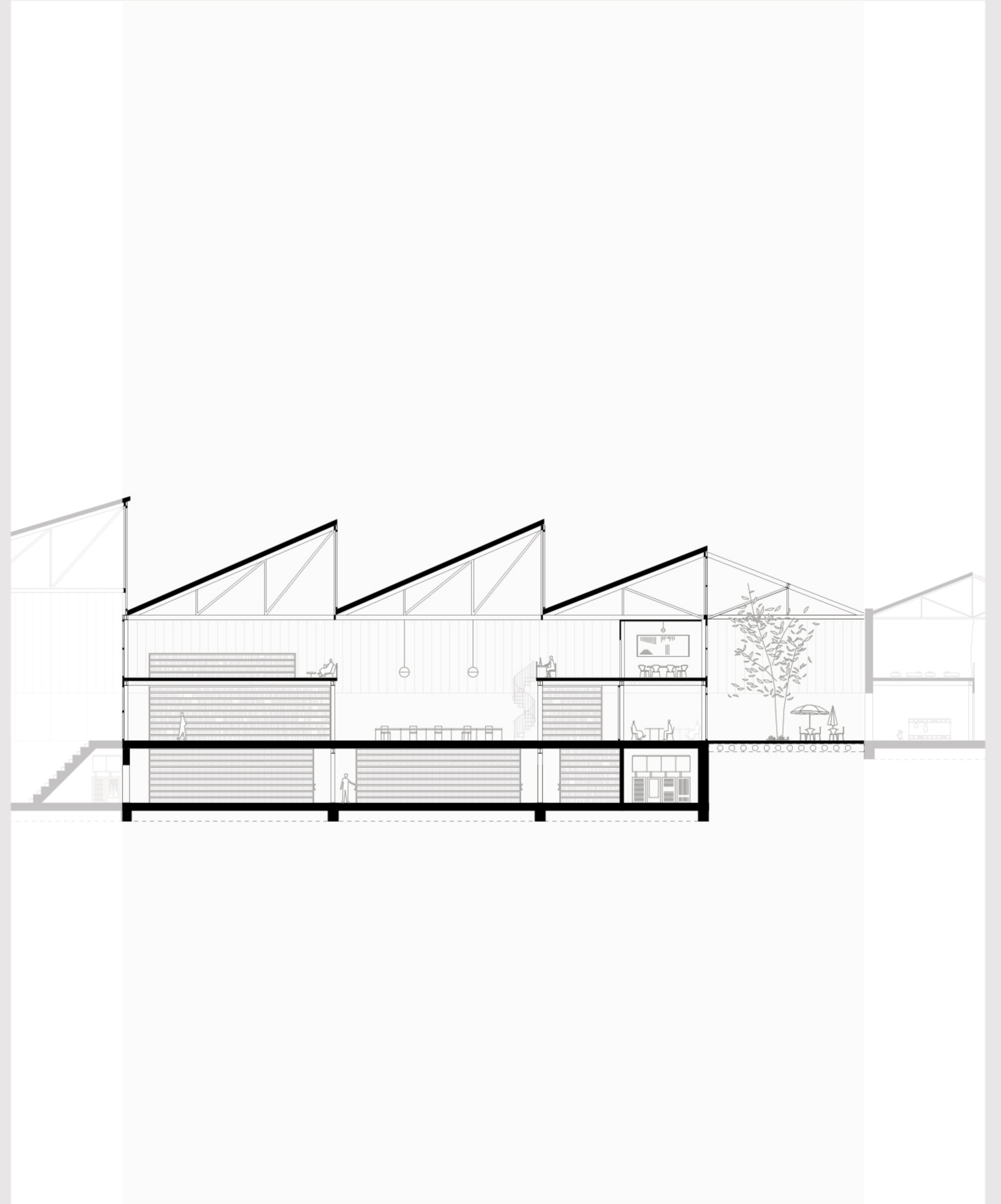
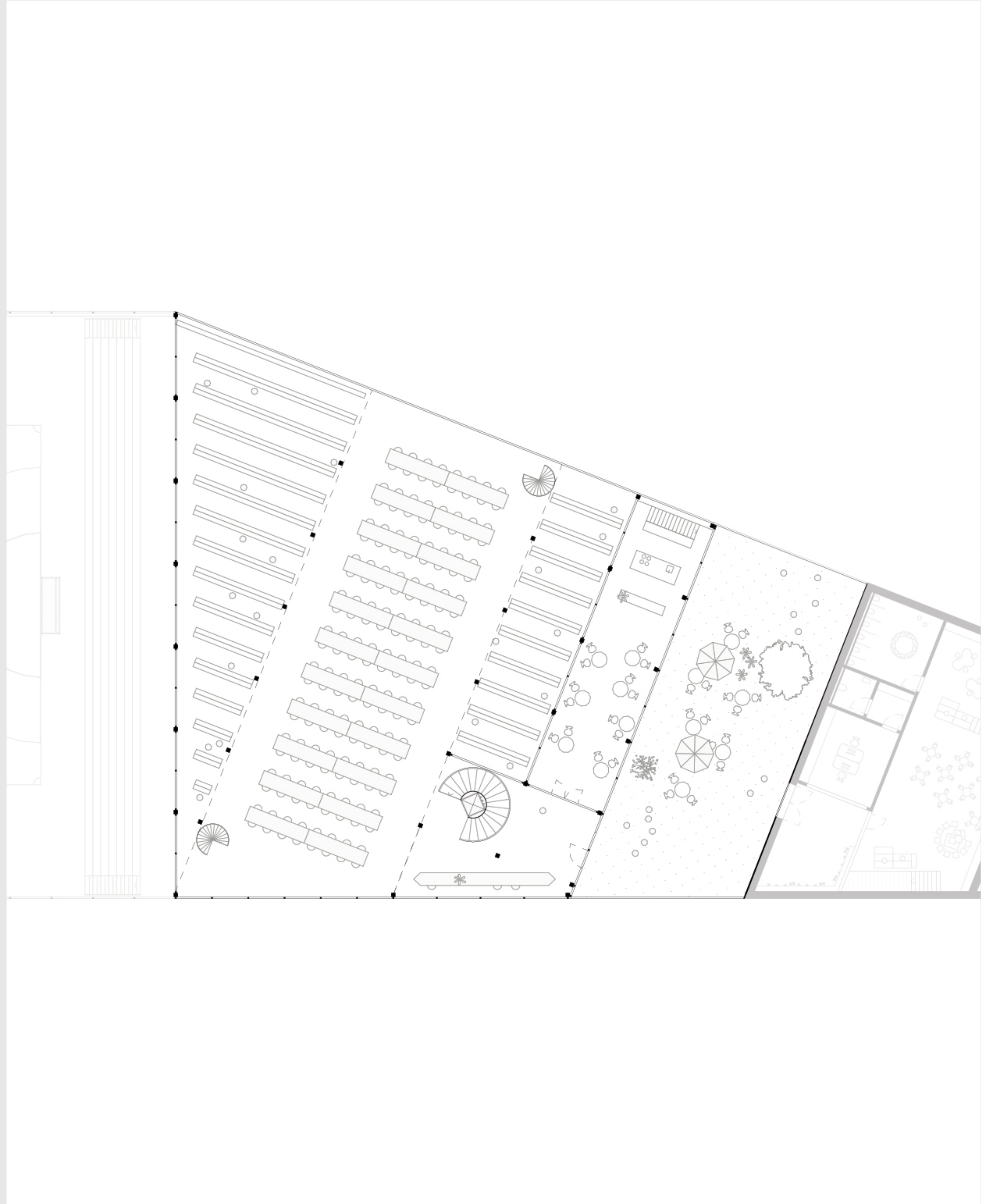
Groundfloor Plan



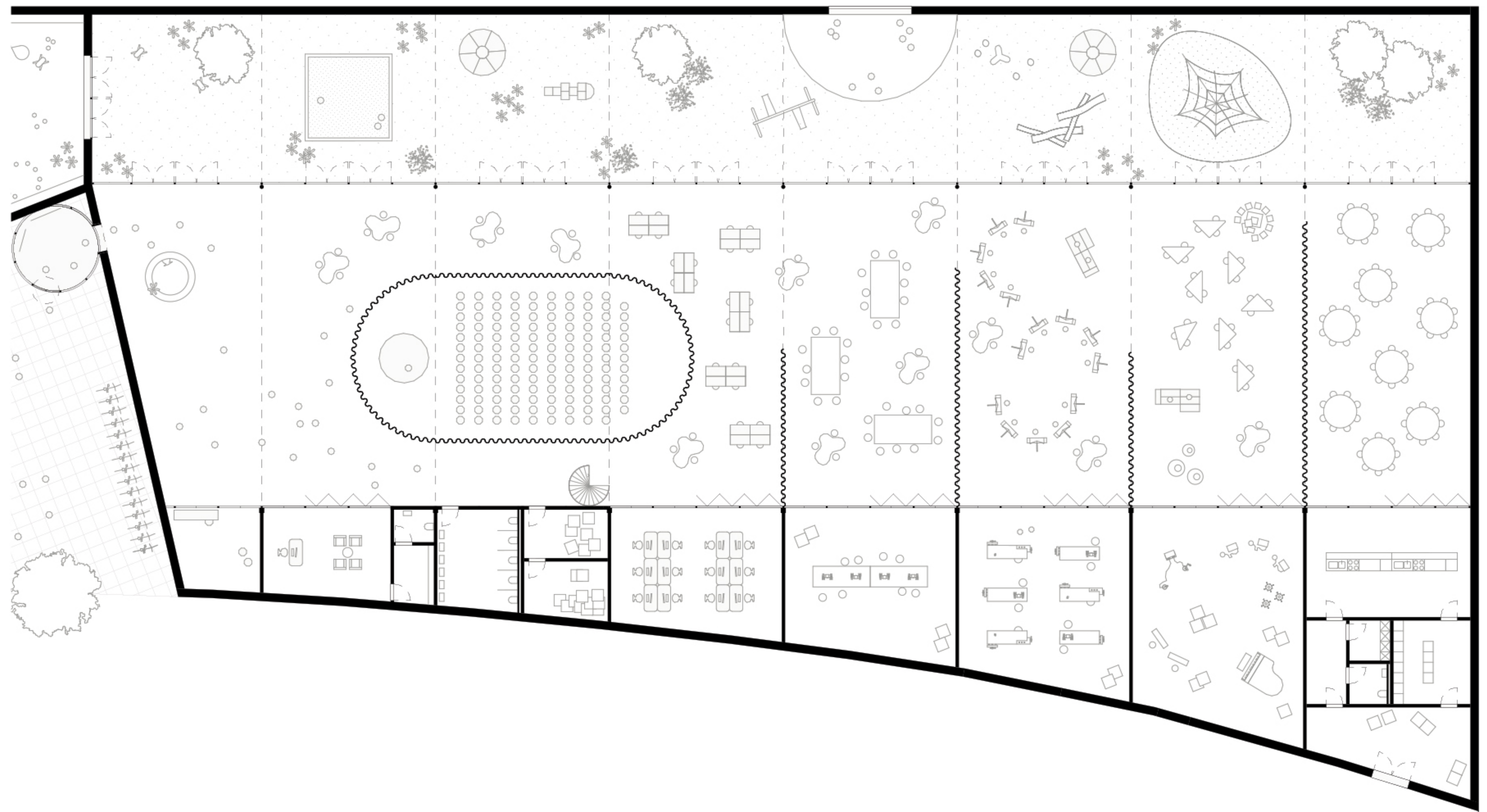
Theater



Housing, Ateliers



Library, Courtyard



Primary School

