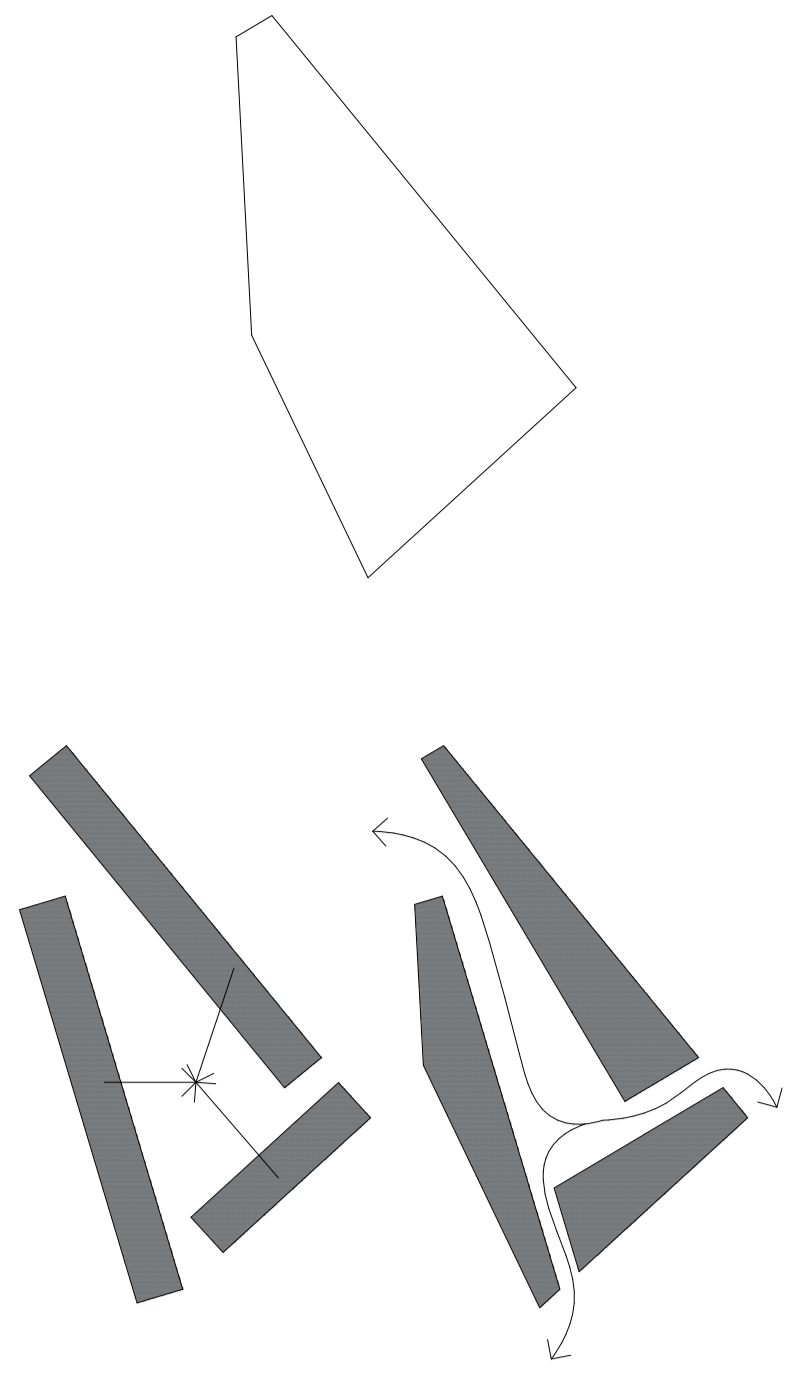
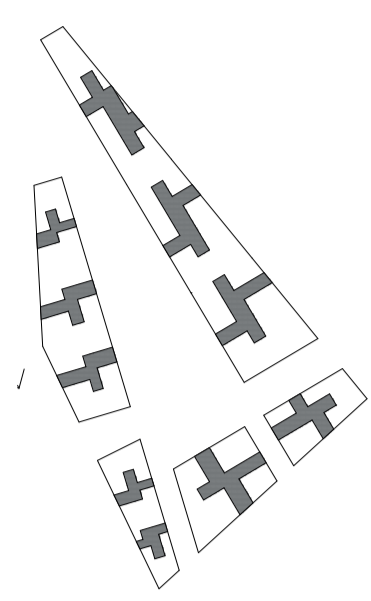


the lot's form



conventional vs. new form

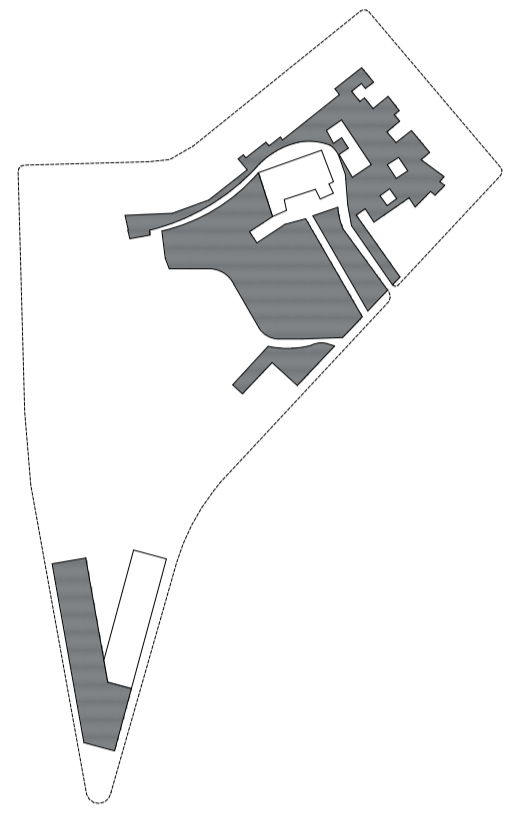


distribution

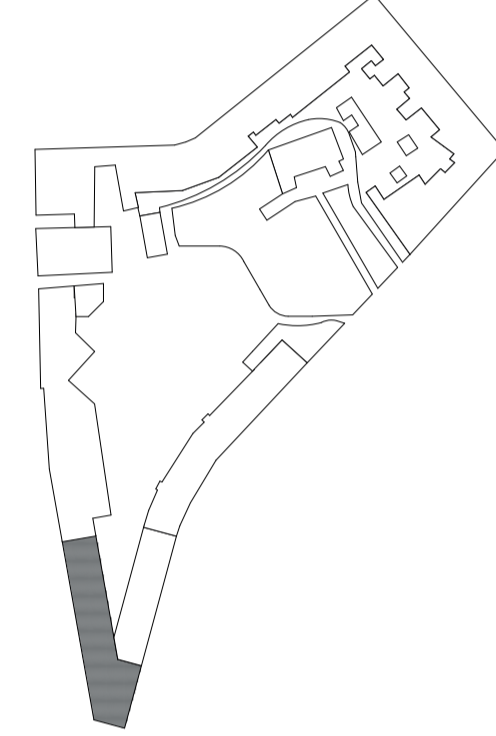
SCHEMES OF THE NEW FORM



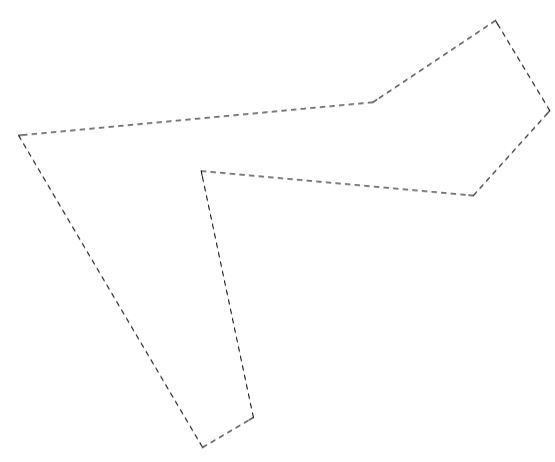
lot and his present building structure



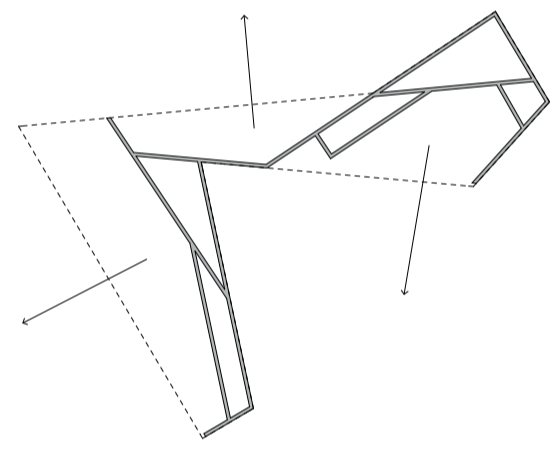
theme of the lot



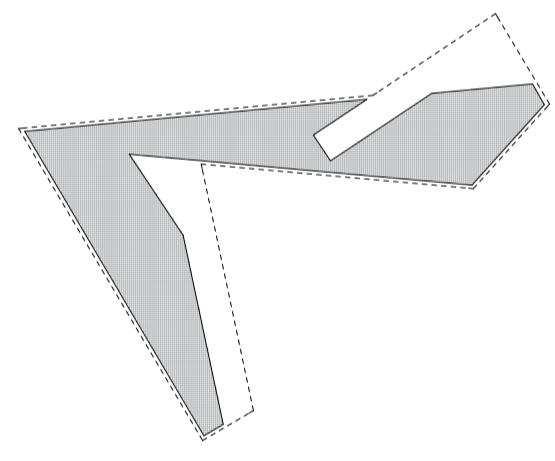
SCHEMES OF how architecture adapts to the given form



form



structure and orientation



free space

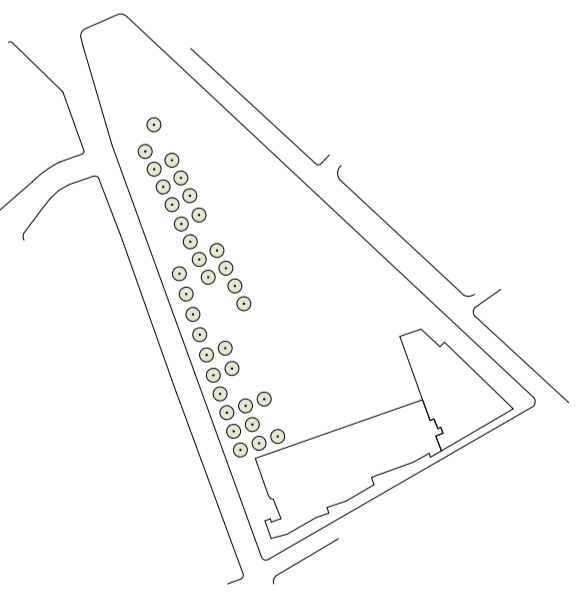
SCHEMES OF THE NEW FORM



infrastructure trees

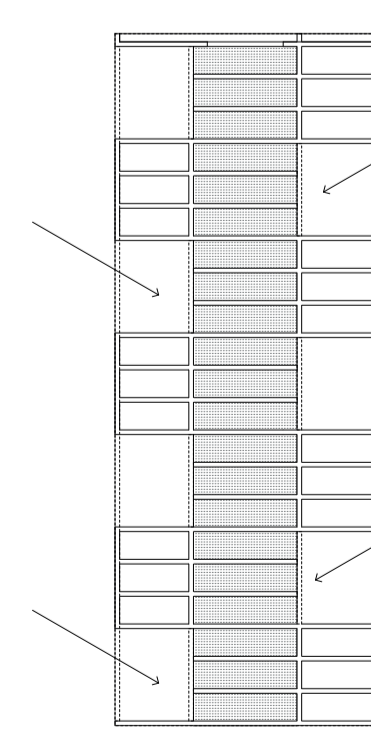


pathway trees

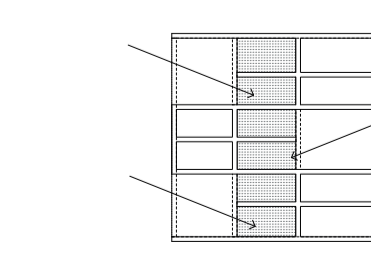


filter trees

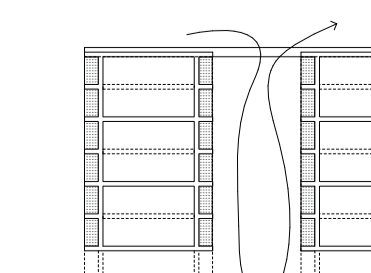
TREE STRATEGY



scheme tower typology



scheme fat building typology



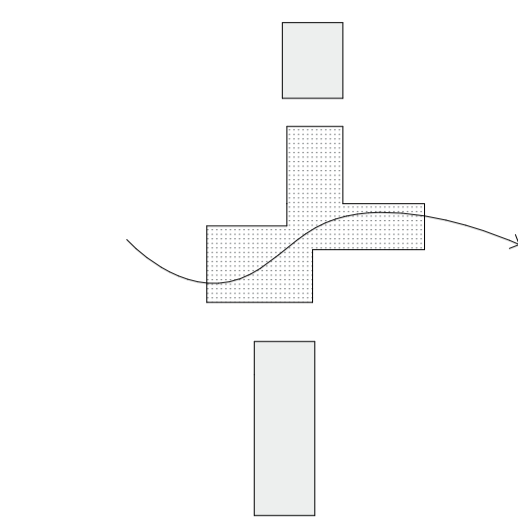
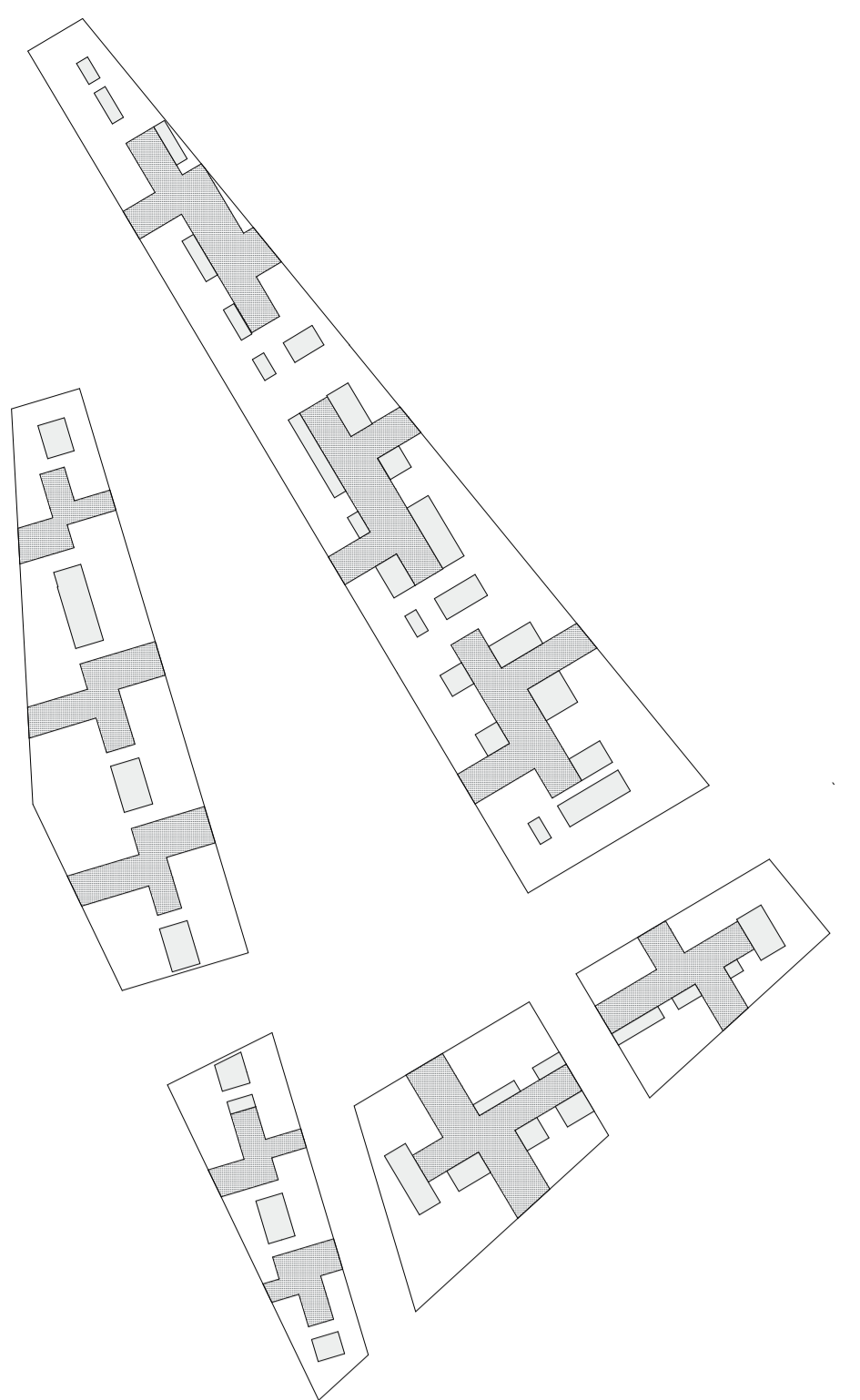
scheme courtyard building typology

SCHEMES OF THE NEW FORM

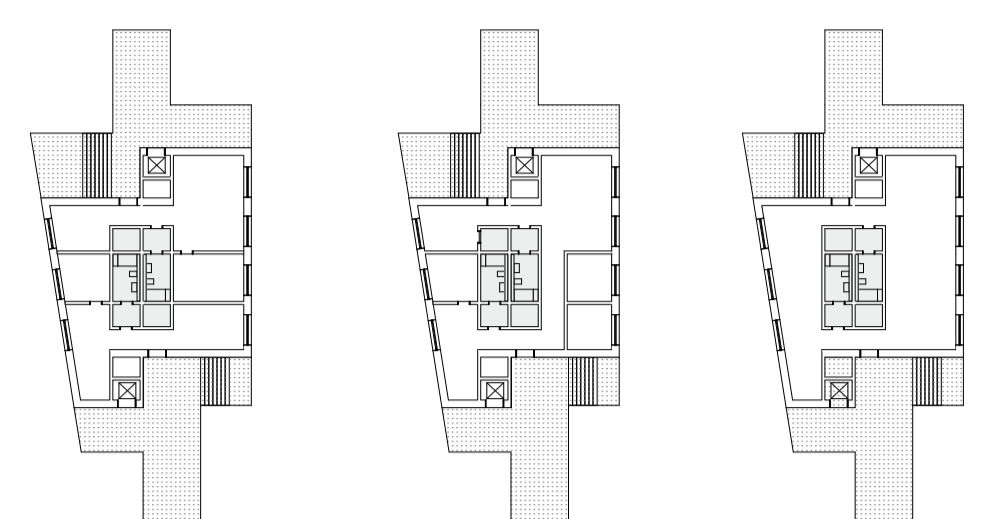
ATELIER FREDERIC BONNET

The flexibility of the ground-floor plan is as a matter of fact one of the most important things to consider in the approach of the shared economy.

The unconventional floor-plan is a result of the variety of shared use. The shape of the lot is challenging and enables new unconventional building typologies.



DISTRIBUTION SCHEME

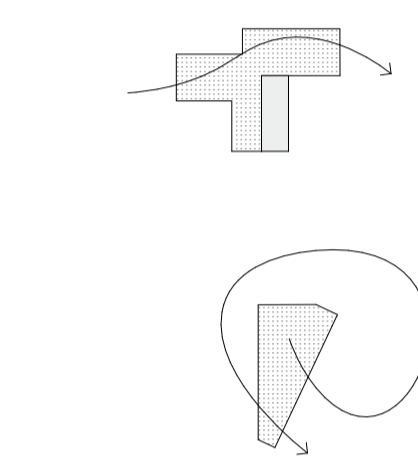
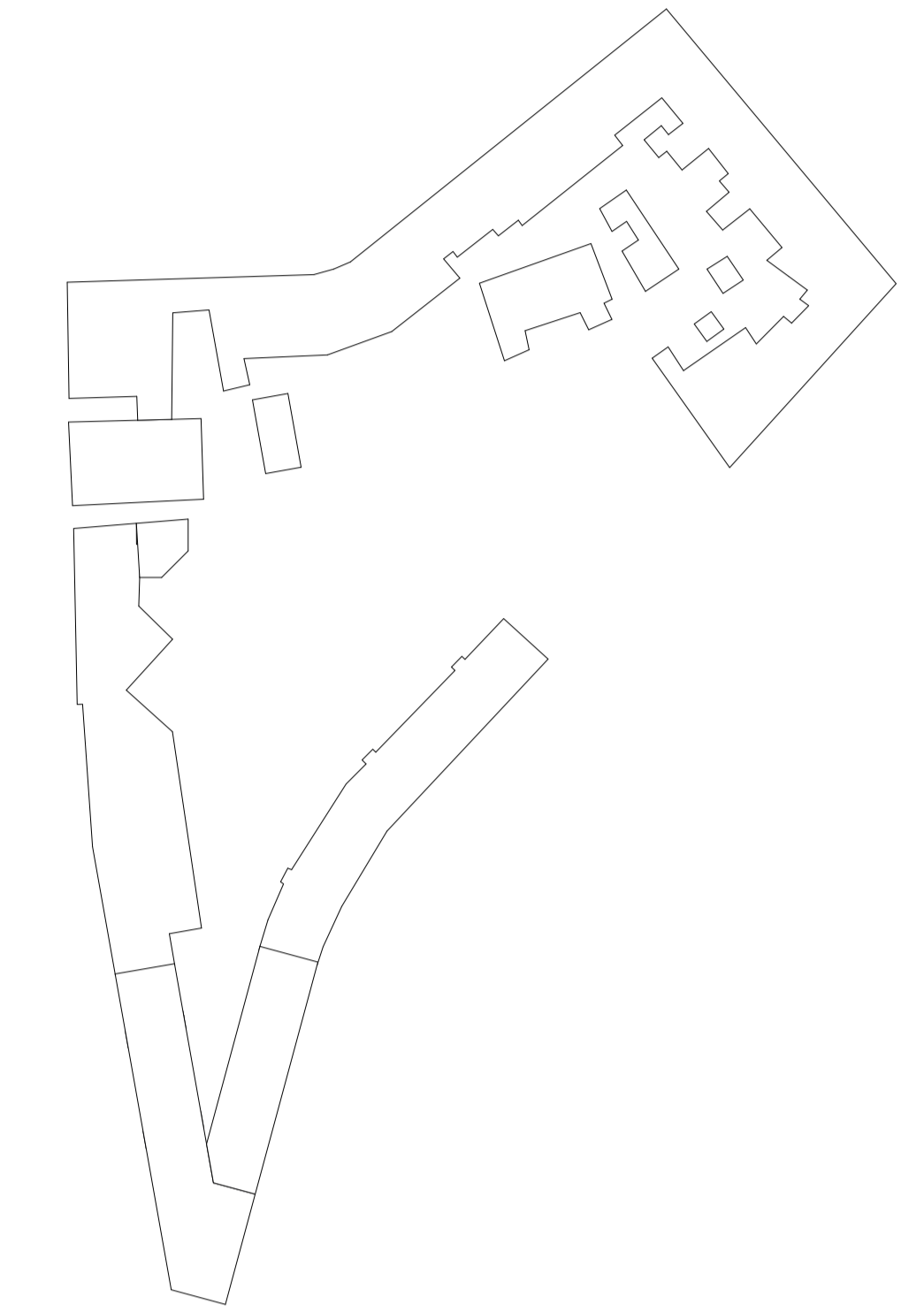


FLEXIBILITY

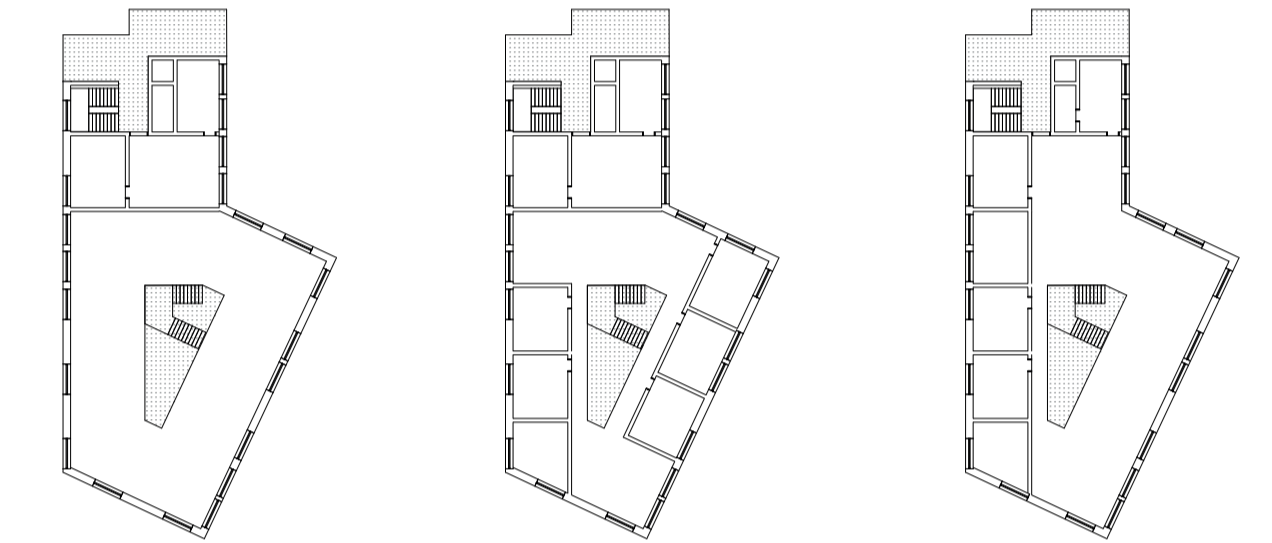
no scale

The existing situation should never be neglected, this is the reason why my approach is strongly connected to the present situation.

In this case we recognize a very classical situation. With my urban addition I manage to close the present situation while welcoming the public to use the courtyard space.



DISTRIBUTION SCHEME

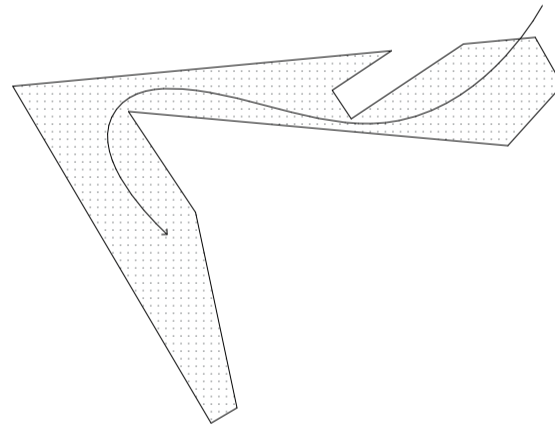
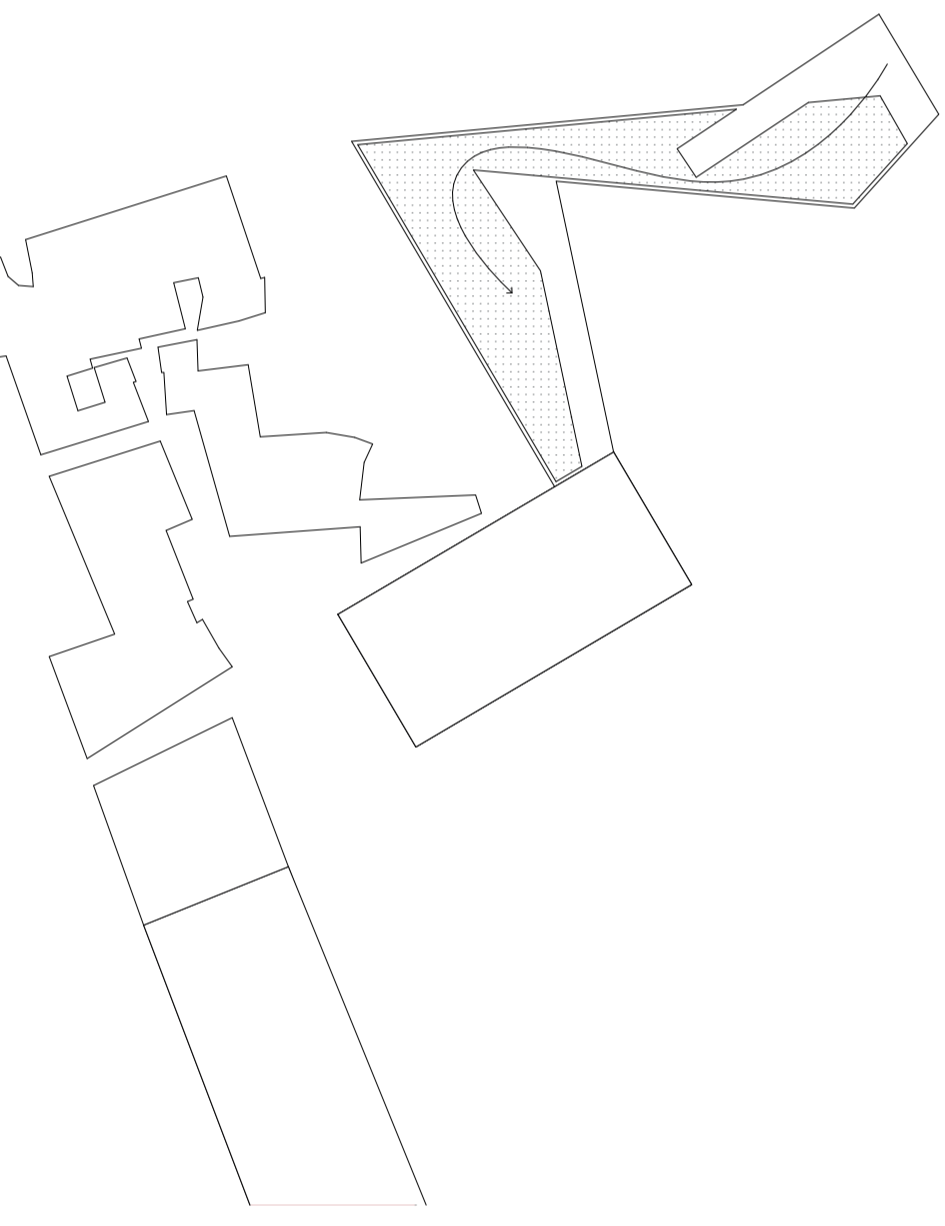


FLEXIBILITY

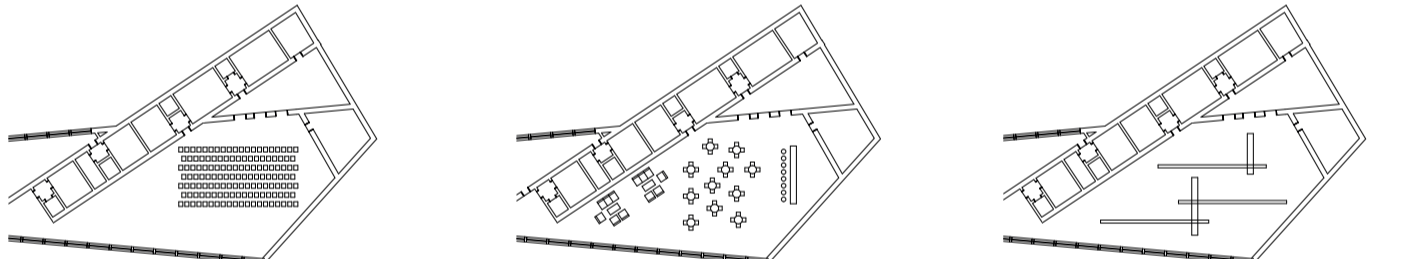
no scale

In the sense of the shared economy a flexible structure is a very important step towards a sustainable architecture. Therefore spaces can be easily adapted.

Flexibility enables that different actions and interactions between people can be hosted in the given architecture.



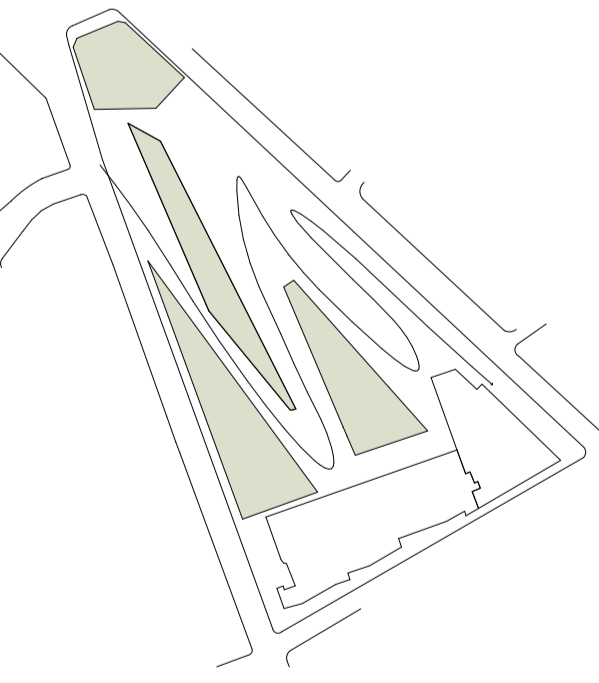
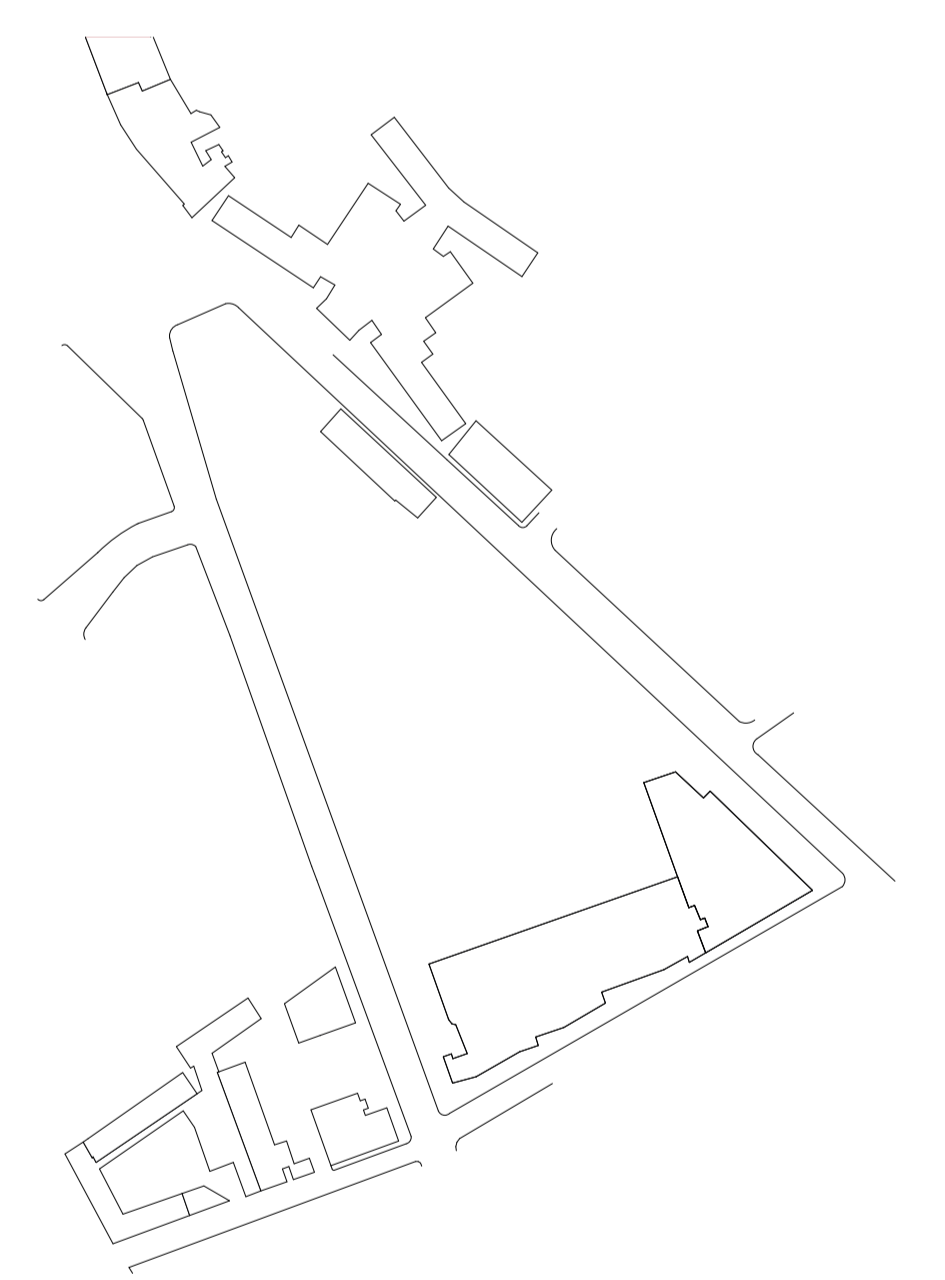
DISTRIBUTION SCHEME



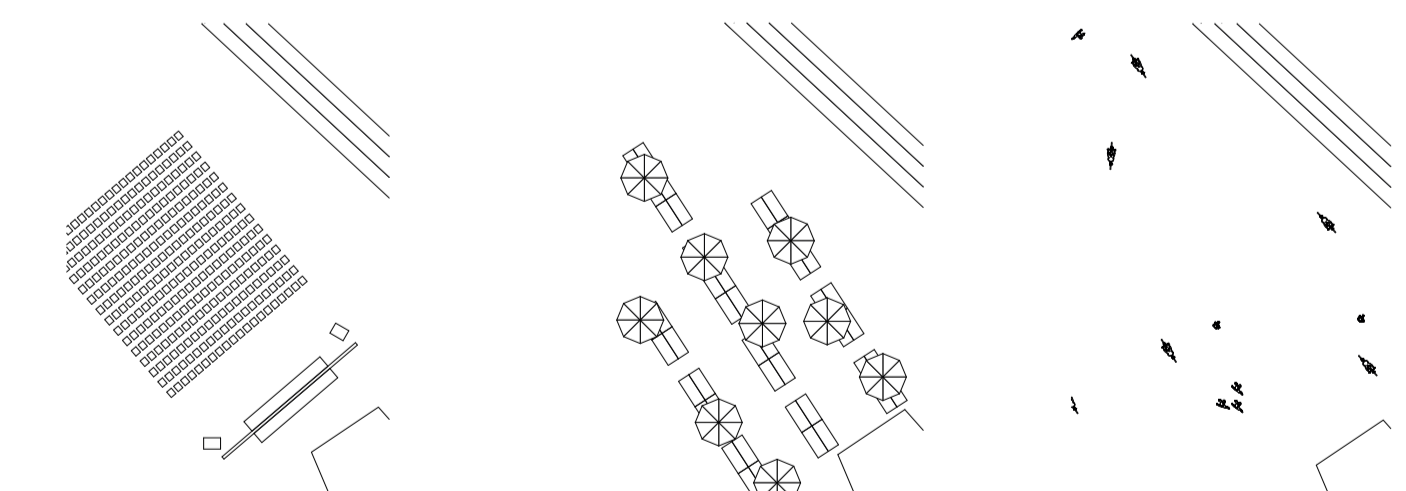
FLEXIBILITY of multi use space

no scale

The tree or green strategy of my project can be explained very well with the situation of the park. I divide my concept of the green strategy in three parts. Infrastructure, filter and pathway trees. Infrastructure trees enrich and reinforce the street in his position giving shadow and enrich the street life. Filter trees, as the name already explain act as a filter between nature and infrastructure. Last but not least we have the pathway trees. They ensure shadow, gathering spots and working as orientation elements in the park.



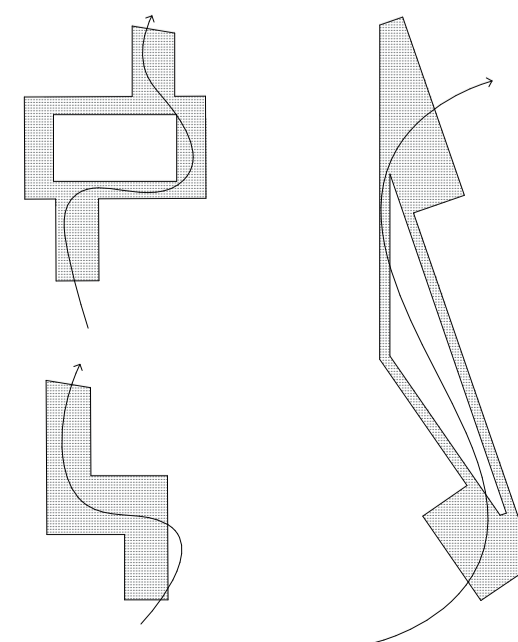
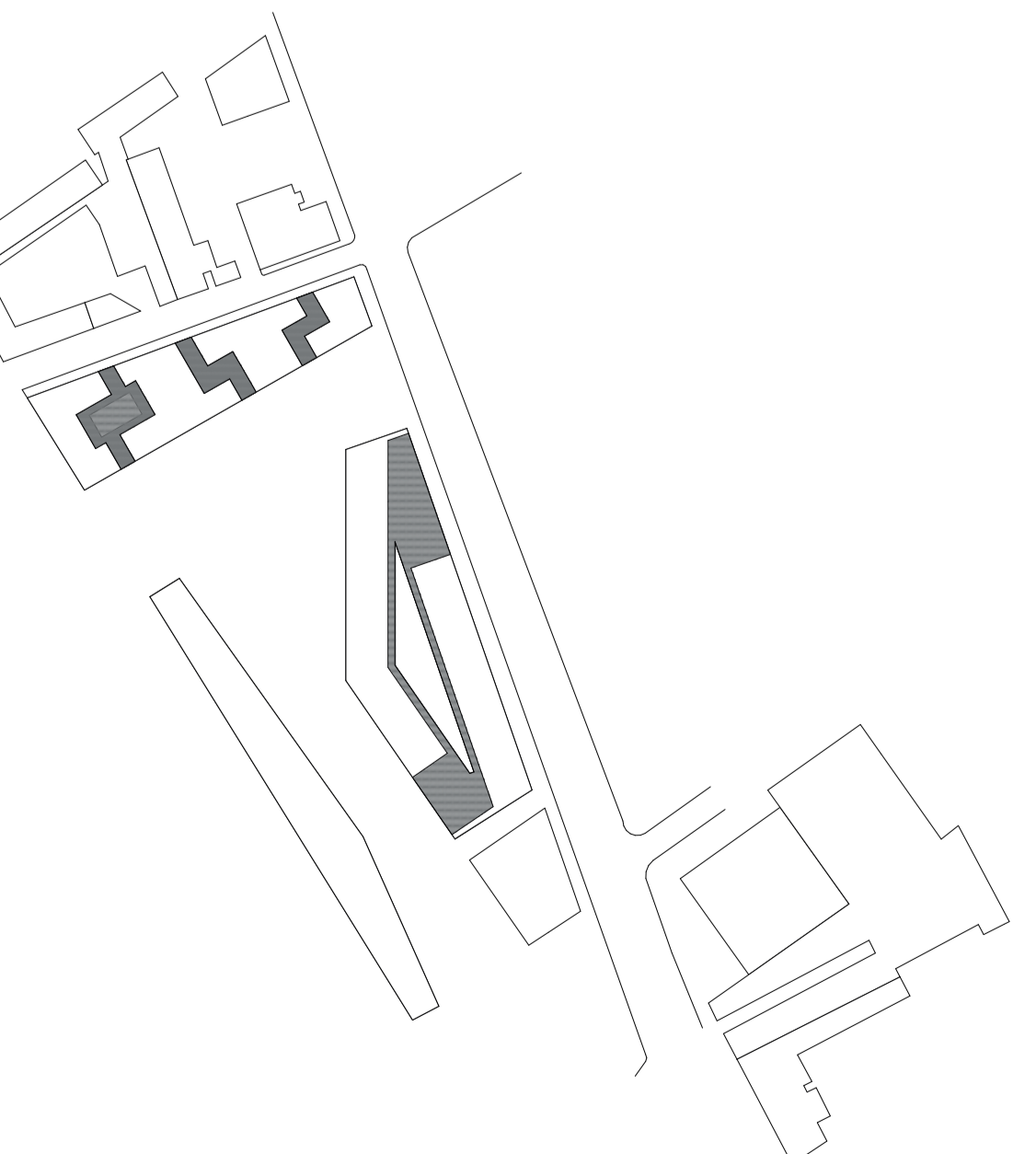
DISTRIBUTION SCHEME of the park



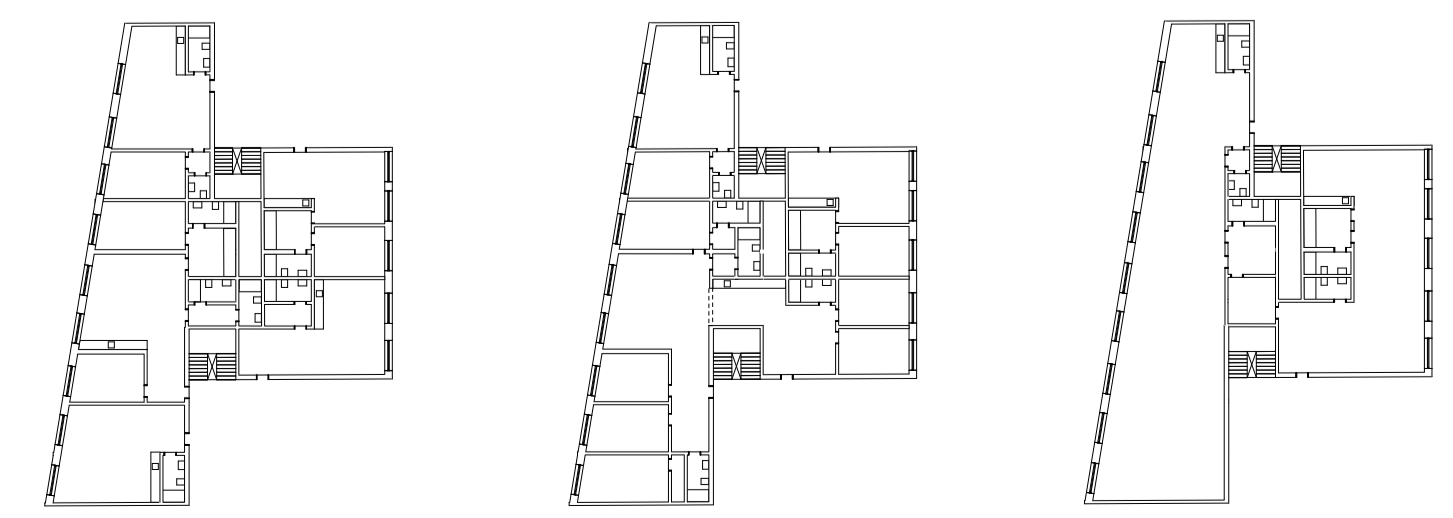
FLEXIBILITY of the use of the park

no scale

Light, distribution and ventilation schemes are fundamental for the development of circulation systems. Introducing new topologies force us to think how light and ventilation interact in this zones. Another fragment in the big puzzle.



DISTRIBUTION SCHEME



FLEXIBILITY diagram

no scale